



# **MADRASAH ALSAGOFF AL-ARABIAH**

## **SECONDARY EDUCATION**



**BRIEFING WITH PARENTS  
SECONDARY 1  
4 FEBRUARY 2017**



# ***PRESENTATION OUTLINE***

**Partnership with Parents**

**Two-way Communication between  
Parents and School**

**School Curriculum**

**Secondary 4 Placement programme**

**Academic Journey**

**O-Level**

**Q & A session**





**School Management  
Committee**

**Principal**

**Vice-Principal  
ARK**

**Vice-Principal  
EMMS**

**Admin  
Manager**

**HOD  
(Primary)**

**HOD  
(Secondary)**

**HOD  
(Primary)**

**HOD  
(Secondary)**

**Pupil's  
Development**

# ***OUR VISION***

**Nurturing Noble Women Exemplary of the Ummahtul  
Mukminin**

## ***OUR MISSION***

We emphasise on building a strong foundation in Arabic and Islamic traditions (Al-Qur'an & As-Sunnah) that nurtures pious Muslimah leaders with academic excellence, creative and innovative potentials to serve our religion, family, community & nation.



# ***OUR PHILOSOPHY***

**In Allah We Trust, In Allah We  
Will Be, For Allah We Shall Serve**





# ***OUR SCHOOL VALUES***

***RESILIENCE***

***HUMILITY***

***EMPATHY***

***INTEGRITY***

***TEAMWORK***

# **PARTNERSHIP WITH PARENTS**



## ➤ Parental involvement

- School's initiatives to involve parents:
- Dialogue with Mudir / HODs
- Meetings with teachers
- Provision of Information (Assessment Calendar)
- Formation of PSG





# ***PARENTS AS PARTNERS***

## **Coach, Mentor and Guide**

- **Communicate with your child daily**
- **Ask questions like:**
  1. **How many verses have you memorized today?**
  2. **Which juzu' did you cover this month?**
  3. **What concept did you study in Maths?**
  4. **Do you understand what you have been taught?**
  5. **Which homework/ assignment is due tomorrow??**





# ***TWO-WAY COMMUNICATION BETWEEN PARENTS AND SCHOOL***

<b><i>NO.</i></b>	<b><i>ISSUES / FEEDBACKS</i></b>	<b><i>CONTACT POINT</i></b>
<b><i>1</i></b>	<b><i>CLASSROOM MATTERS, STUDENTS WELFARE, DISCIPLINE ISSUES, FEES ETC</i></b>	<b><i>FORM TEACHERS</i></b>
<b><i>2</i></b>	<b><i>SUBJECT MATTERS</i></b>	<b><i>HOD EMMS / ARK</i></b>
<b><i>3</i></b>	<b><i>GENERAL DISCIPLINE ISSUES, CCA</i></b>	<b><i>HOD PD</i></b>
<b><i>4</i></b>	<b><i>FEEDBACK ON TEACHERS, STAFF &amp; GENERAL FEEDBACKS</i></b>	<b><i>PRINCIPAL / VP</i></b>

# SCHOOL CURRICULUM

## LANGUAGES

Arabic  
English  
Malay

## SPIRITUAL

Qiyam Nadwah



CCA

## ACQUIRED KNOWLEDGE

Mathematics  
Science  
Sejarah

CIP

## REVEALED KNOWLEDGE

Al-Quran, Fiqh,  
Tauhid/Hadith  
Tafsir & Ulum,  
Mustalah Hadith



# **DEVELOPMENTAL FRAMEWORK**

<b>LEVEL</b>	<b>CHARACTERISTICS</b>	<b>CHARACTER/VALUES</b>	<b>ACADEMIC JOURNEY</b>
<b>SEC 1</b>	<b>TRANSITION FROM PRI TO SEC</b>	<b>HUMILITY INTEGRITY</b>	<b>INCREASE IN ASPECTS &amp; TOPICS IN EACH SUBJECT</b>
<b>SEC 2</b>	<b>ENHANCE PHYSICAL AND EMOTIONAL GROWTH</b>	<b>TEAMWORK RESILIENCE EMPATHY</b>	<b>BUILDING FOUNDATIONS TO GCE EXAMS</b>
<b>SEC 3</b>	<b>TRANSITION FROM JUNIOR TO SENIOR PUPIL. ENHANCE SPIRITUAL GROWTH</b>		<b>STREAMING EXAMINATIONS [PLACEMENT]</b>
<b>SEC 4</b>	<b>PREPARING FOR THE NEXT CHALLENGE</b>	<b>TEAMWORK, RESILIENCE EMPATHY, INTEGRITY, HUMILITY</b>	<b>GCE EXAMINATIONS [PLACEMENT]</b>

# ***SECONDARY TEACHING TEAM***

*HOD ARK*

*Us Siti Khadijah*

*HOD EMMS*

*Mr Mohd Zakaria*

*Arabic*

*U. Damawiyah*

*U. Zauwiah*

*U. Nur Hayati*

*U. Siti Khadijah*

*Science & Mathematics*

*Mr Mohd Zakaria*

*Mr Hamdan*

*English*

*Ms Nurjannah*

*Mdm Fauziah*

*RK*

*U. Saniah*

*U. Zauwiah*

*U. Nurhayati*

*U. Siti Khadijah*

*Malay, Sejarah & Sastera*

*Us Suhana*

*Cikgu Aisyah*

*Cikgu Siti*



# ***SUBJECTS OFFERED***

**SECONDARY 1**

**SECONDARY 2**

*Lughah*

*Nahu Sarf*

*Tauhid / Tafsir*

*Al-Qur'an*

*English*

*Mathematics*

*Science*

*Bahasa Melayu*

*Fiqh*

*Sejarah/Hadith*

*Ulum Qur'an*

*Mustalah Hadith*

# ***SUBJECTS OFFERED UPPER SECONDARY***

- **Religious Knowledge distributed over 3 semesters**
  - **Sec 3 (Sem 1 & Sem 2)**
  - **Sec 4 (Sem 1) Final Results for RK**
- **Language and Acquired Knowledge distributed over 4 semesters**
- **More Remedial and Enrichment programs will commence from Sec 3**



# ***SUBJECTS OFFERED AT SECONDARY 3***

<i>Semester 1</i>	<i>Semester 2</i>
<i>Tauhid</i>	<i>Tafsir</i>
<i>Sejarah</i>	<i>IRK</i>
<i>Al-Qur'an</i>	
<i>Mathematics</i>	
<i>Science</i>	
<i>English</i>	
<i>Bahasa Melayu</i>	
<i>Sastera</i>	
<i>Lughah</i>	
<i>Nahu</i>	
<i>Fiqh Munakahat</i>	

# ***SUBJECTS OFFERED AT SECONDARY 4***

<i>Semester 1</i>	<i>Semester 2</i>
<i>Hadith</i>	
<i>Faraidh</i>	
<i>Mathematics</i>	
<i>Science</i>	
<i>English</i>	
<i>Bahasa Melayu</i>	
<i>Sastera</i>	
<i>IRK</i>	
<i>Sejarah</i>	
<i>Lughah</i>	
<i>Nahu</i>	



# ***EXAMINATION WEIGHTAGE***

## **Category A :** **Al-Quran**

### **Marks Weightage**

- o **50% from daily class hafazan & Works**
- o **50% from monthly test**
- o **Mid Year 40% ,**
- o **End of Year 60%**

## **Category B:**

### **Examinable Subjects:**

**Arabic, English, Malay, Maths, Science & Fiqh**

### **Marks Weightage**

- o **30% from class assignments, projects and tests**
- o **70% from Semestral Examination**
- o **Mid Year 40% , End of Year 60%**

## **Category C:**

### **Modular Subjects**

- All other subjects**
- Taught over one semester.**

### **Marks Weightage:**

- 40% from class assignments, projects and daily work**
- 60% from topical test**
- NO EXAMS**
- Total Grading (100%) comes from the two components above**

# ***PASSING CRITERIA***

<b>Level</b>	<b>Criteria</b>	<b>Pass / Fail</b>
<b>Sec 1 - 3</b>	<b>Above 50% in Overall Percentage</b>	<b>Promoted to next level</b>
	<b>Below 50% in Overall Percentage or fail 5 subjects</b>	<b>Retained</b>



# ***ARK PROGRAMMES FOR SEC 1***

<b>Programme</b>	<b>Term</b>	<b>Date</b>	<b>Duration</b>
Halaqah (thursday)	Twice Termly	start on 2 Feb	after school
Find your Direction	Term1	14 March	2 hours
Feqh Workshop	Term 2	19 May	3 hours
Tajwid Workshop	Term 3	29 July	4 hours
Sibawaih Day Camp	Term 3	19 Aug	6 hours

# ***EMMS PROGRAMMES FOR SEC 1***

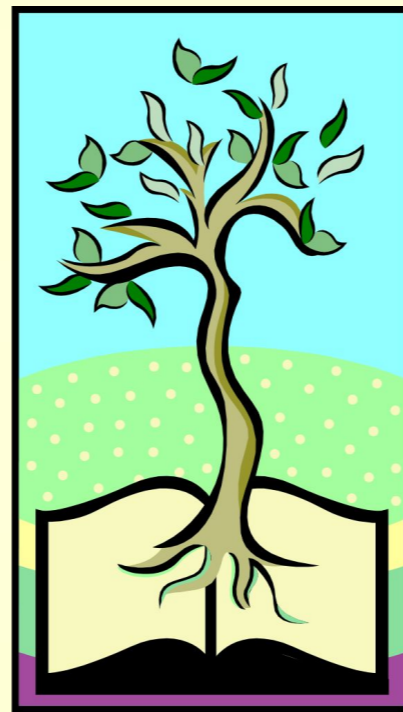
<b>Programme</b>	<b>Term</b>	<b>Date</b>	<b>Duration</b>
<b>Biology Prac Sessions</b>	<b>Termly</b>	<b>start on 1 Feb</b>	<b>after school</b>
<b>The Temasek Trail: The Story of a Nation</b>	<b>Term 2</b>	<b>23 March</b>	<b>4 hours</b>
<b>DNA &amp; Life</b>	<b>Term 1</b>	<b>13 March</b>	<b>6 hours</b>
<b>Heat Shield</b>	<b>Term 1</b>	<b>13 March</b>	
<b>ML:Bengkel Penulisan Kreatif</b>	<b>Term 1</b>	<b>15 March</b>	<b>2 hours</b>
<b>ML:Bengkel Ujian Video Lisan</b>	<b>Term2</b>	<b>TBC</b>	



# **ACADEMIC JOURNEY**

## **UPPER SECONDARY**

Prepares pupils to  
continue their  
studies in an  
Institute of Higher  
Learning  
e.g. DPI or  
Polytechnics



Need to  
understand  
the Entry  
Requirements

# ***PLACEMENT CONSIDERATIONS***

**Setting the pupils up for success**

**Choosing the right combination and being able to perform, achieve and attain a good aggregate for both school and 'O' level examinations.**

**Competency level and performance trends.**

**Pathway decision**





# ***PLACEMENT***

- All subject combinations are **broad-based** and allow pupils to gain entry into DPI or Polytechnics
- Attempt to **match the strengths and weaknesses** of the pupils to the **right subject combination**
- **BUT** whatever the **FINAL** subject combination assigned to, school has the **final say**

**Understand and respect decision**



# ***PLACEMENT PROCESS***

- **Application**

All applicants will be offered subjects based on the school programme.

- **Timeline**

Pupils given option form - Nov (after Sec 3 End-Year Exam)

Submission of forms

Release of Placement Results - 3rd week of November

# ***PLACEMENT PROCESS***

- ***APPLICATION BY PUPILS AND PARENTS***

- ***REPRESENTS PREFERENCE AND ASSESSMENT OF STRENGTHS AND WEAKNESSES***

- ***ALLOCATION OF PROGRAM***

- ***PROFESSIONAL ASSESSMENT OF THE STRENGTHS AND WEAKNESS OF PUPILS, BASED ON THEIR RESULTS AND THE TEACHERS' KNOWLEDGE OF THE PUPILS,***

- ***APPLIES MERITOCRATIC PRINCIPLE WHEN PLACES ARE LIMITED, BY USING THE OVERALL SCORE***

# **SECONDARY 4 COURSE PROGRAMMES**

**SECONDARY 3  
END OF YEAR EXAMS**

**PROGRAM A**

**ARABIC  
ENGLISH  
H MALAY/MALAY  
IRK  
SASTERA**

**PROGRAM B**

**ARABIC  
ENGLISH  
H MALAY/MALAY  
IRK  
MATHEMATICS  
SASTERA**

**PROGRAM C**

**ARABIC  
ENGLISH  
H MALAY/MALAY  
IRK  
MATHEMATICS  
COMBINED SCIENCE**

**PROGRAM D**

**ARABIC  
ENGLISH  
H MALAY/MALAY  
IRK  
COMBINED SCI  
SASTERA**

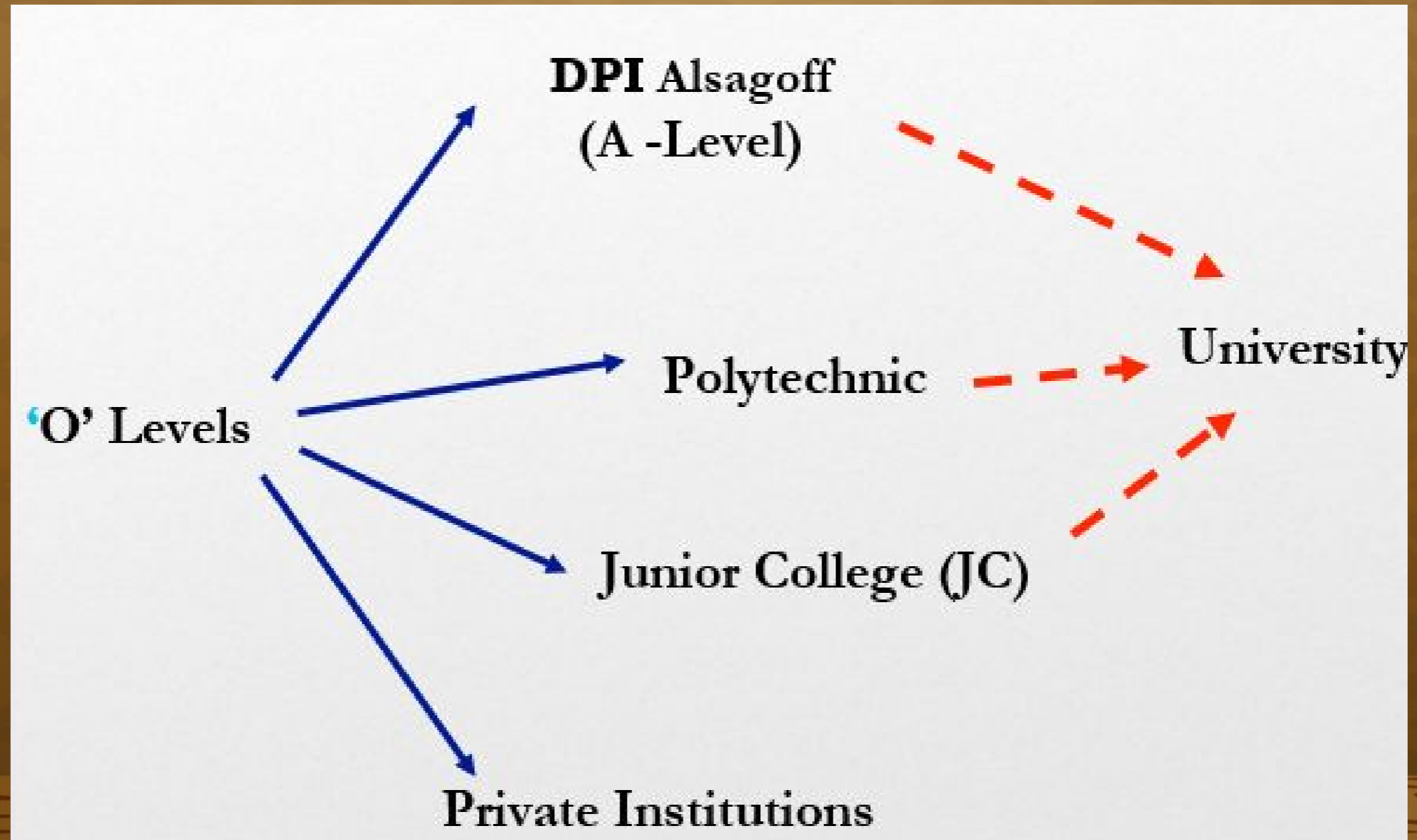
**PROGRAM E**

**ARABIC  
ENGLISH  
H MALAY/MALAY  
IRK  
SASTERA  
COMBINED SCI  
MATHEMATICS**

**N LEVEL PROGRAM**



# ***POST-SECONDARY EDUCATION***



***WE WELCOME YOUR SUPPORT AND  
INVOLVEMENT IN THE PURSUIT OF EXCELLENCE  
FOR OUR MADRASAH***



**THANK YOU**

**شكرا**